

# Goldsboro Union Station Multimodal Transportation Center

Goldsboro City Council  
August 17, 2009



# Multimodal Transportation Center



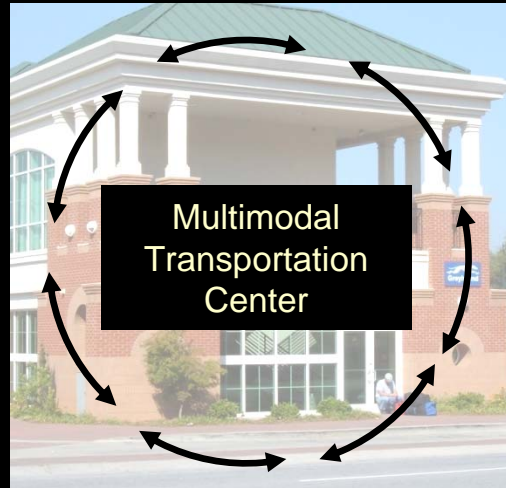
Gateway Transit



Future rail service



Taxis



Greyhound



Walk or cycle



Car parking



# Immediate Needs



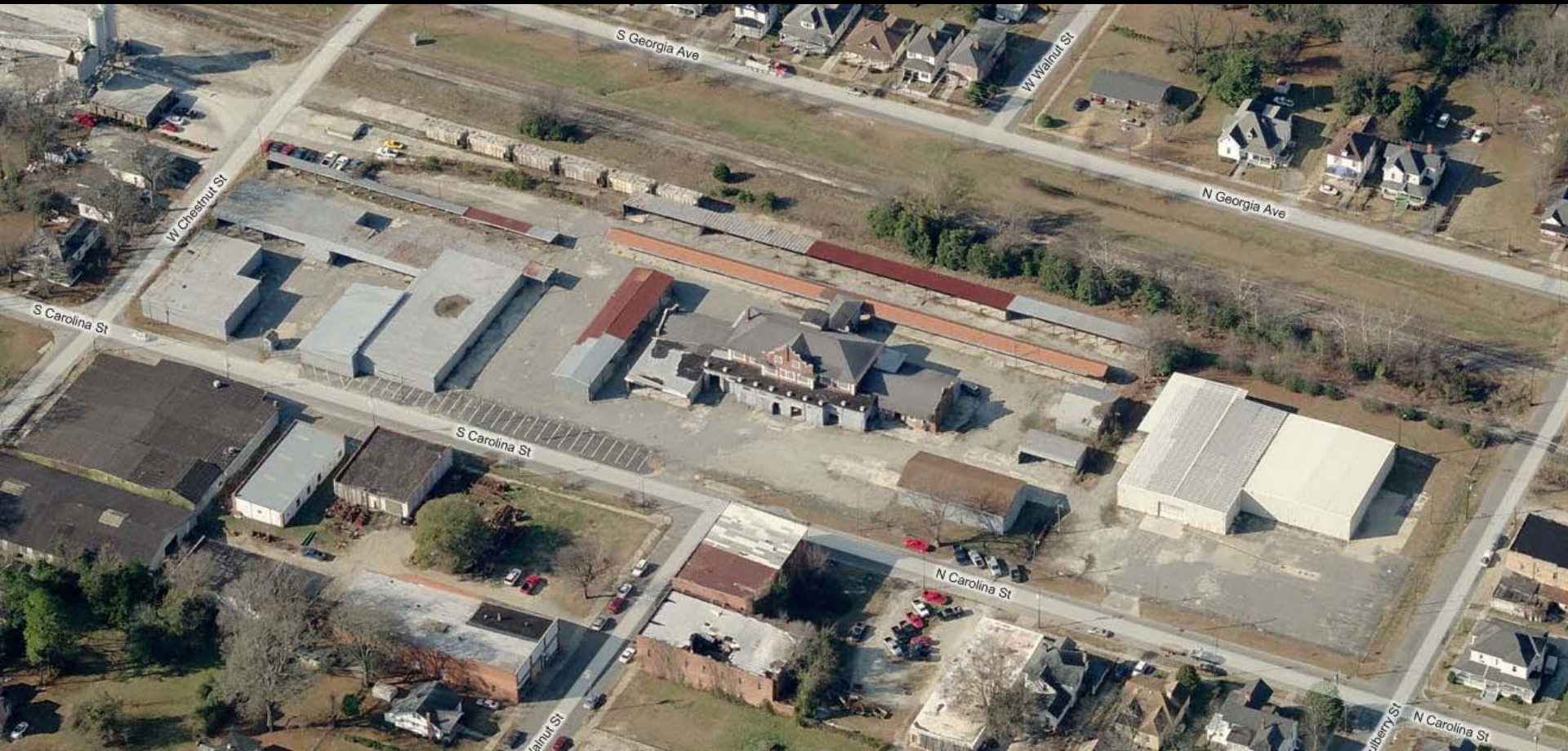
Greyhound  
Depot

Gateway Transit  
Transfer Facility



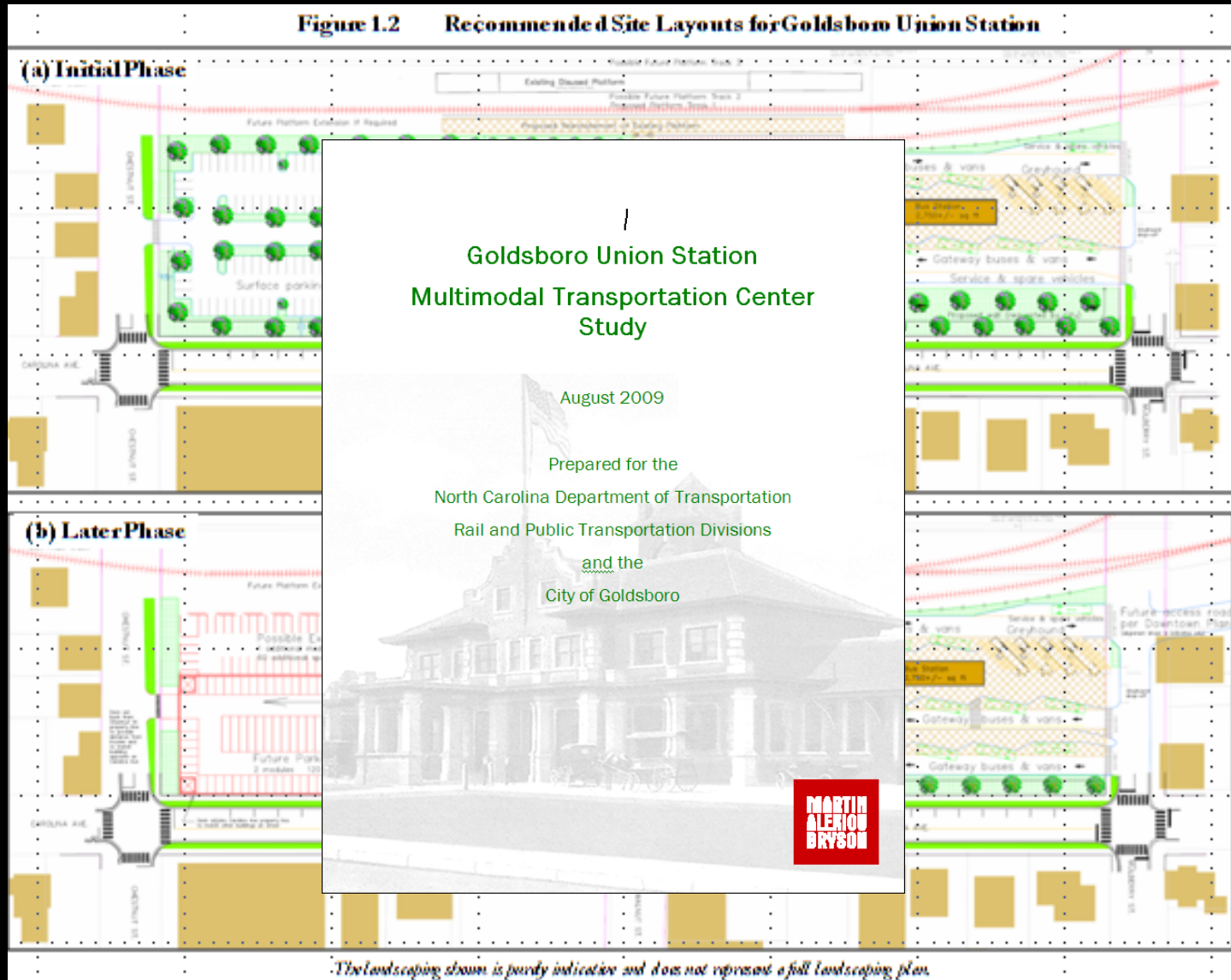


# NCDOT Purchased Union Station...





# ... This Study Establishes the Design



# Study Area

Goldsboro Union Station



NCRR Wye





# Study Process

- Staff Steering Committee
- Consulting Team
- Review Background Information
- Stakeholders' Views, Requirements
- Transit Needs Forecast
- Updated Functional Specification
- Site Layout

# Functional Specification

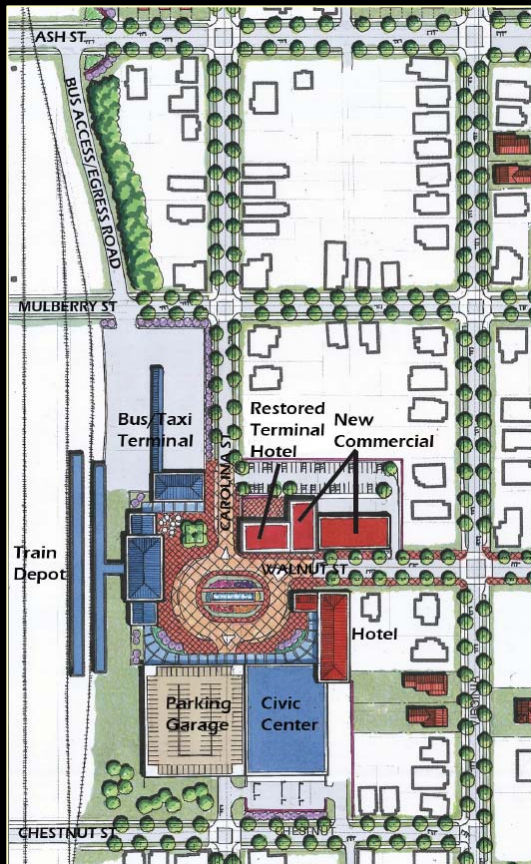
- Existing needs, short-term plans
- Allow for long-term transit growth & trains
- Flexible building space for ancillaries
- Drop-off, taxis, etc

Amount	Function	Area (sq ft)	Notes
<b>Building – Exclusive</b>			
1	ticket window	90	
1	secure office	180	
1	employee break room	150	
<b>Building – Shared</b>			
1	passenger male bathroom	150	3 stalls
1	passenger female bathroom	200	4 stalls
1	indoor waiting area	1,125	75 passengers @ 15 sf/passenger
1	vending/telephone/ATM area	50	
1	custodial closet	50	
1	tele/elec/mech room	100	
<b>Site – Exclusive</b>			
9	40' bus bays	n/a	to accommodate maximum urban bus size
2	22' conversion van bays	n/a	
4	employee parking spaces	n/a	
<b>Site – Shared</b>			
4	passenger short-term parking spaces	n/a	
2	taxi parking spaces	n/a	
2	passenger drop-off parking spaces	n/a	
1	outdoor waiting area	375	25 passengers @ 15 sf/passenger
1	trash/recycling area	n/a	
	Covered sidewalk space for loading next to bus/van slips/bays	n/a	
	Covered walkway connecting bus terminal to Union Station	n/a	
	Covered bicycle parking	144	12 bicycles
	Sidewalks connecting to pick-up/drop-off area and short- and long-term parking	n/a	
	Covered walkway connecting to terminal to Union Station		
	Sidewalks connecting to pick-up/drop-off area and short- and long-term parking		



# Key Goals for Site Layout

Master Plan  
Development  
Potential



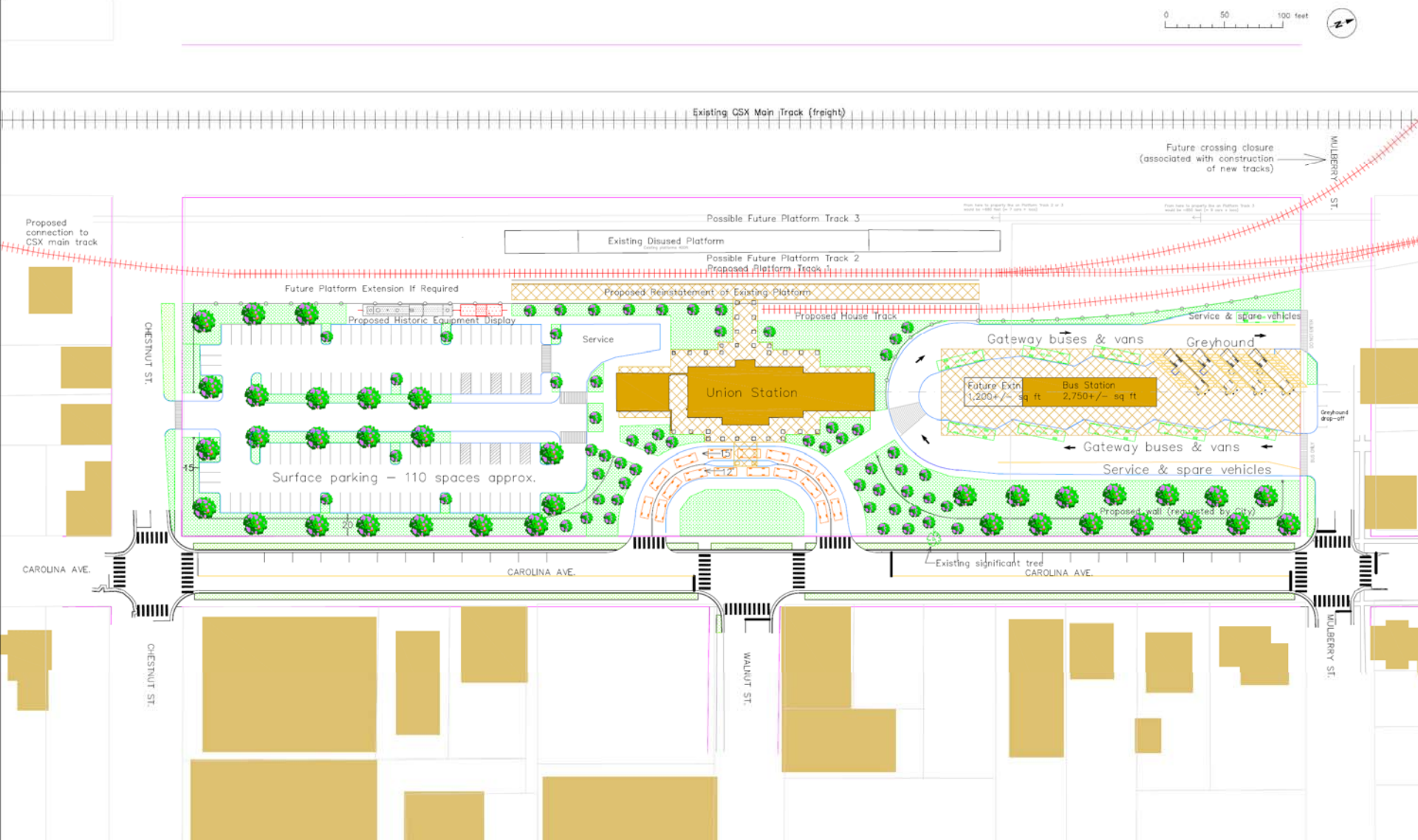
Meet  
Transportation  
Needs



Historic Preservation



# Initial Phase





# Initial Phase



# Initial Phase





# Initial Phase



# Initial Phase



# Initial Phase





# Initial Phase



# Initial Phase



# Initial Phase





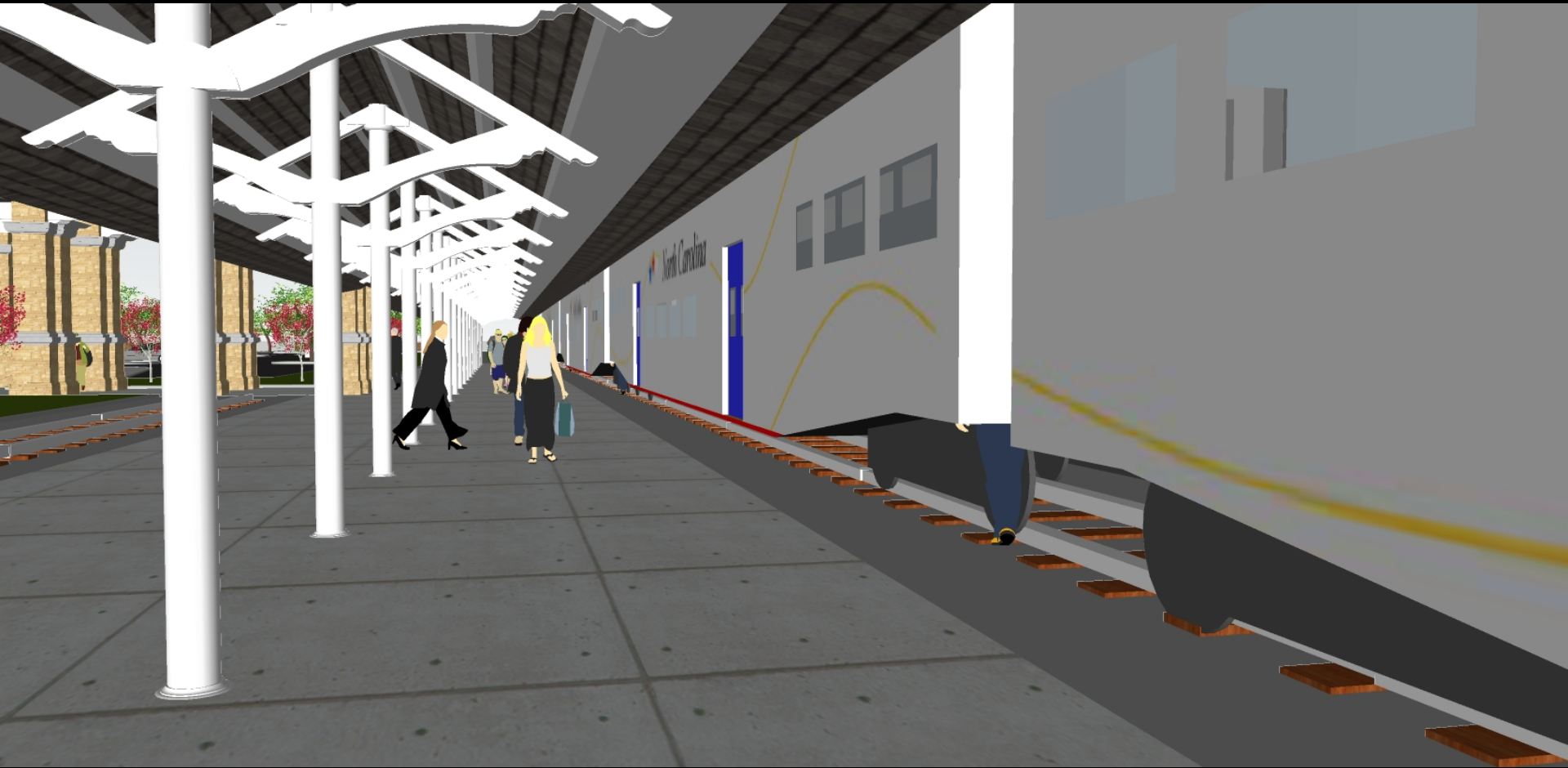
# Initial Phase



# Initial Phase



# Initial Phase





# Initial Phase

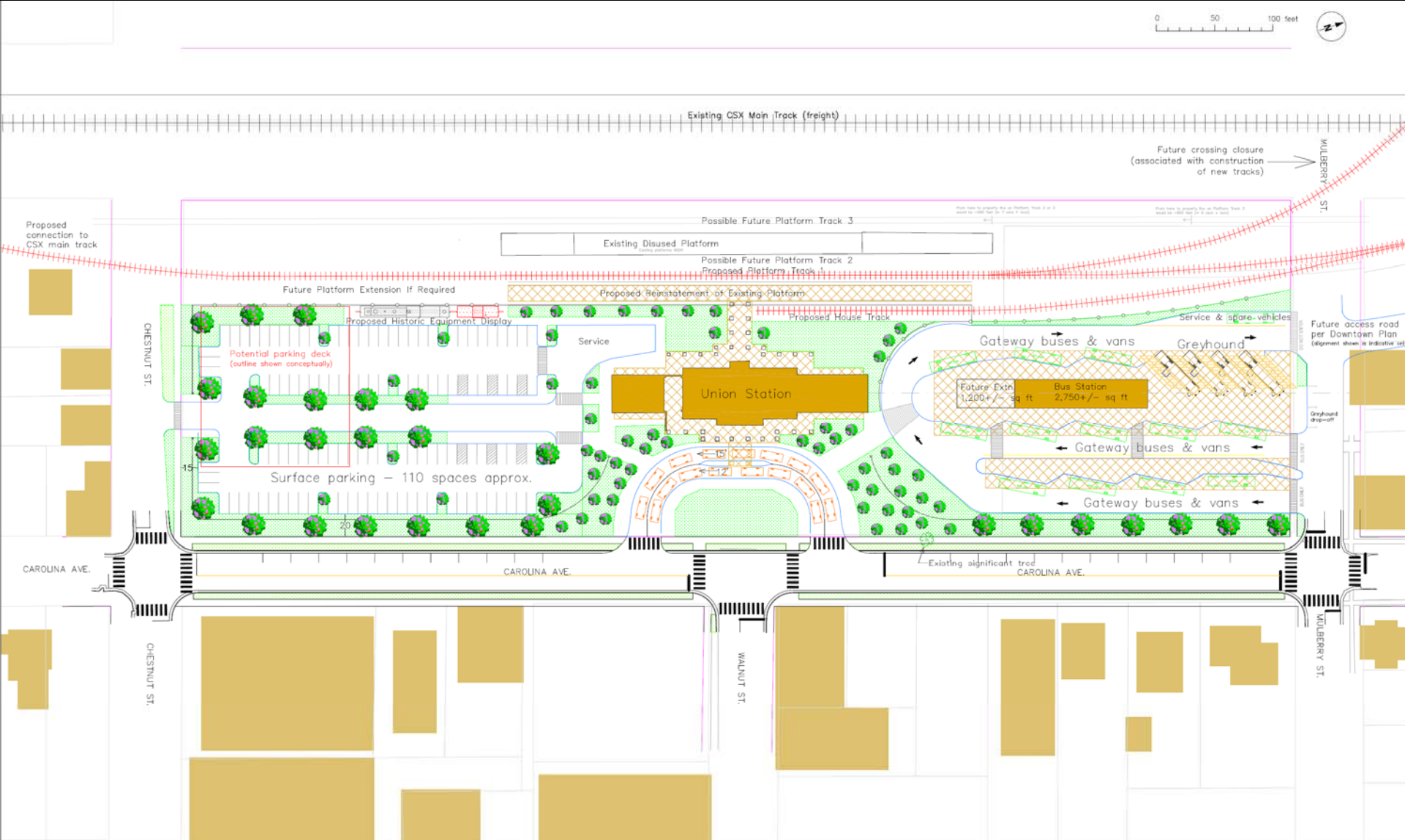


# Initial Phase





# Future Phase



# What Happens Next?

- Goldsboro City Council adopts report
- City, Gateway Transit, NCDOT approve site layout
- NCDOT works with City & Gateway Transit:
  - Environmental documents
  - Site rehabilitation
  - Identify funding sources for initial phase
  - Detailed design



# Yes, It Really Happens!

