

Goldsboro City Council Alternative Redistricting Maps

Local Redistricting Service

March 21, 2022

Marshall Hurley, Attorney, Marshall Hurley PLLC

Caroline Mackie, Attorney, Poyner Spruill

Bill Gilkeson, Mapmaker

Standard Disclaimers

- We did not use partisan considerations or look at partisan election data in drawing these alternative maps.
- We did not talk with any individual board member about drawing these maps outside of a public meeting.

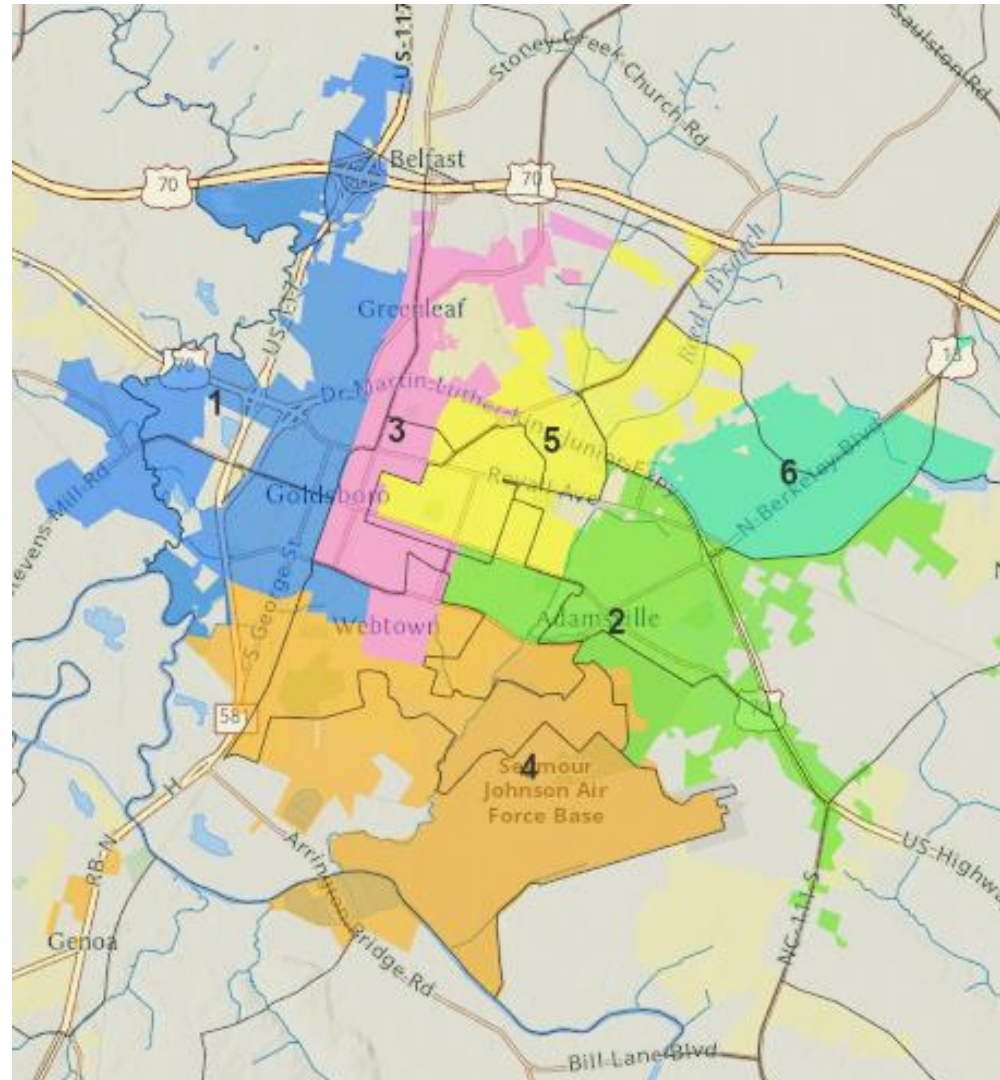
Criteria followed:

- We used the corrected Census data for Goldsboro's population. We included the 593 people incorrectly counted in a sliver outside the city limits next to Neuse Correctional Center.
- We observed the legal requirements of one person one vote – all the districts are within the deviation range of plus or minus 5% from the ideal district population number. Using the corrected Census data, that ideal number for the six City Council districts in Goldsboro is 5,708.
- We avoided pairing incumbents – none of the three options pair incumbents. Each of the six incumbents would keep the same district number as now.
- We tried to preserve the cores of existing districts in all three alternatives. More about this in a minute.

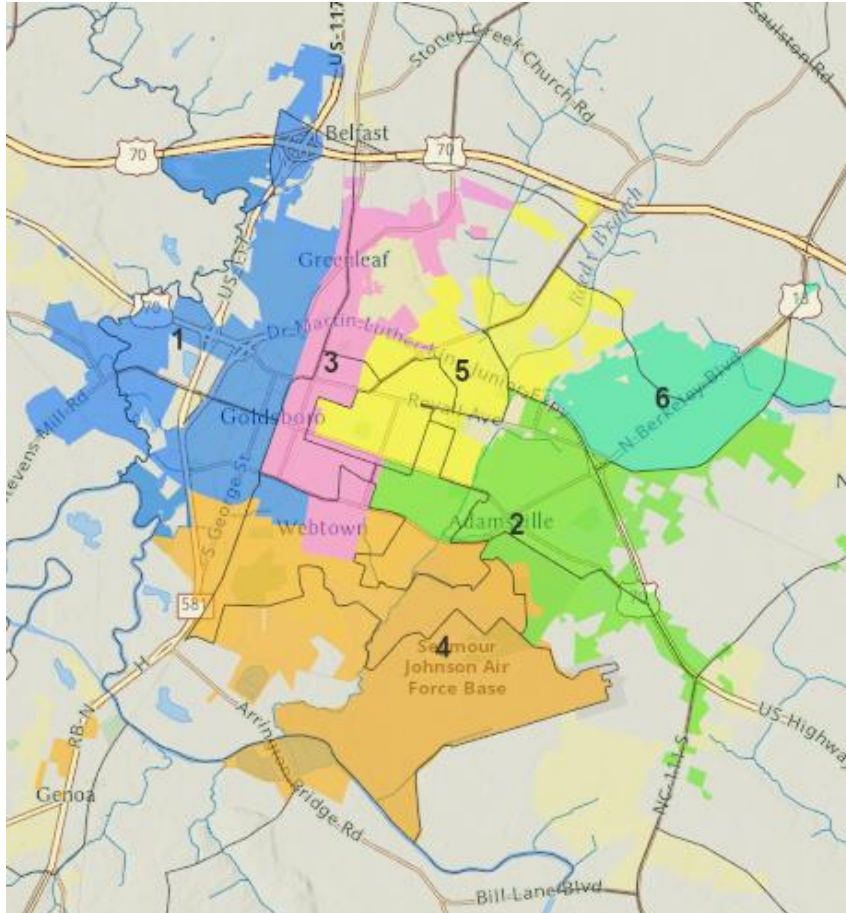
Additional goals:

- Try to make the districts compact.
- Avoid dilution of minority voting strength.
- Avoid racial gerrymandering.

Current Districts



Current districts' population deviations



District Number	Corrected 2020 Total Pop	Ideal Dist Pop	Raw Number Deviation from Ideal Pop	Percent Deviation from Ideal Pop
1	4,999	5,708	-709	-12.42%
2	6,347	5,708	+639	+11.19%
3	5,669	5,708	-39	-0.68%
4	5,532	5,708	-176	-3.08%
5	6,024	5,708	+316	+5.54%
6	5,679	5,708	-29	-0.51%
City Total	34,250			

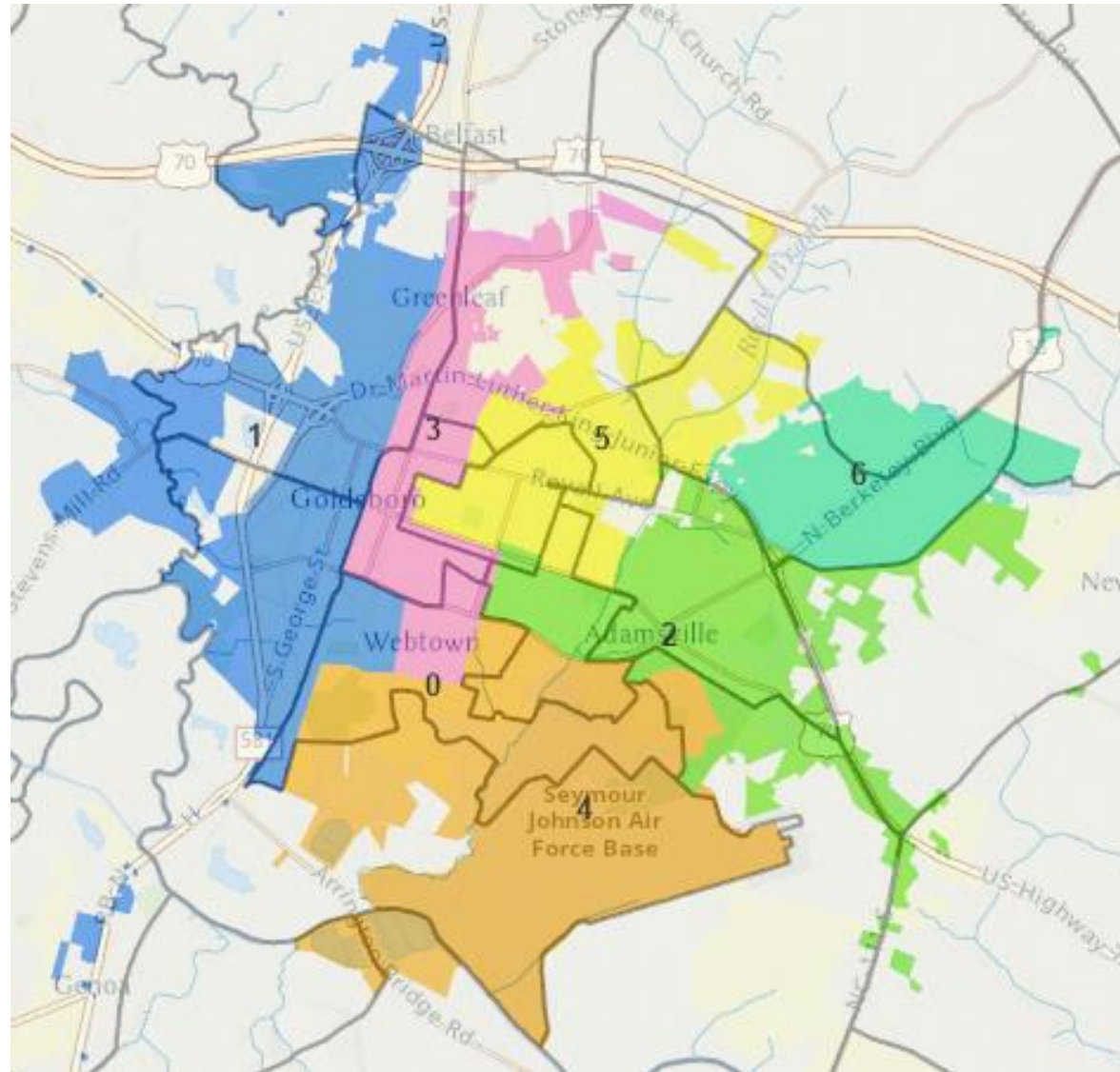
Why can't all the districts within the 5% range be left alone?

- Goldsboro is an object lesson in why that isn't always possible.
- Districts 3, 4, and 6 are within the plus or minus 5%.
- But they can't all be left alone in the same plan.
- District 1 needs to gain at least 425 people to get past minus-5%.
District 1 sits on the western edge of town, and touches only Districts 3 and 4. It must get those people from either District 3 or from District 4 or from both.
- So Districts 3 and 4 can't both be left alone in the same map.
- The following three options approach this reality in three different ways.

How the three options deal with this reality:

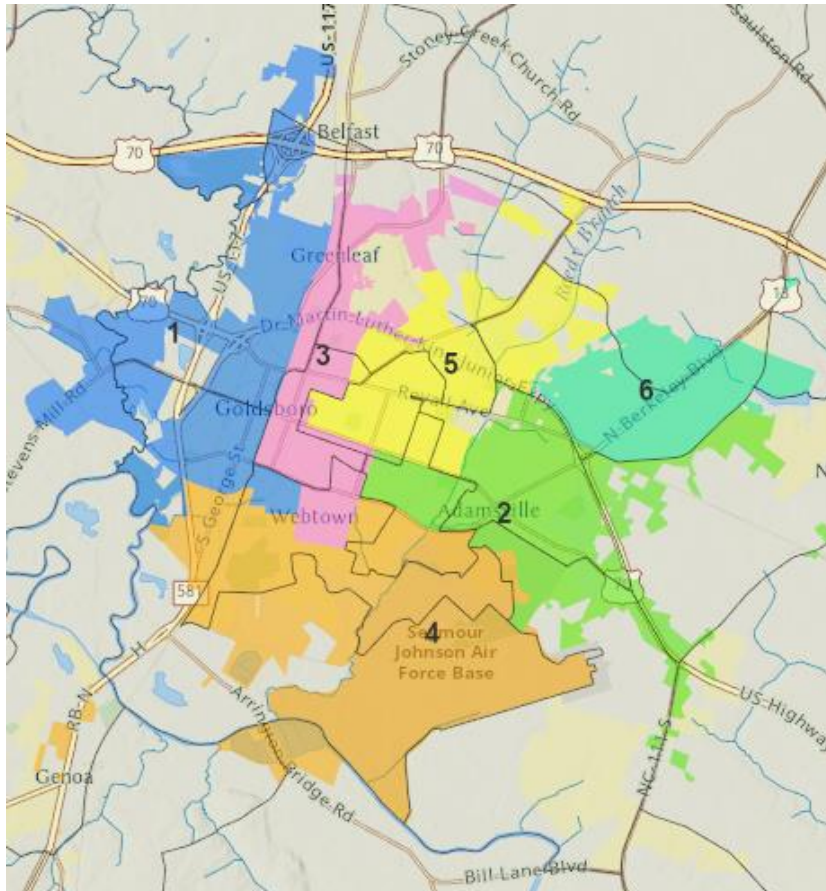
- Option A leaves District 3 untouched, but gives District 1 its needed territory by taking from District 4.
- Option B leaves District 4 untouched, but gives District 1 its needed territory by taking from District 3.
- Option C gives District 1 territory from both Districts 3 and 4, but each of those districts loses less territory than in Options A or B.
- District 6, which sits in the northeast corner of town, can be left untouched in all three options. And it is.

Goldsboro Option A

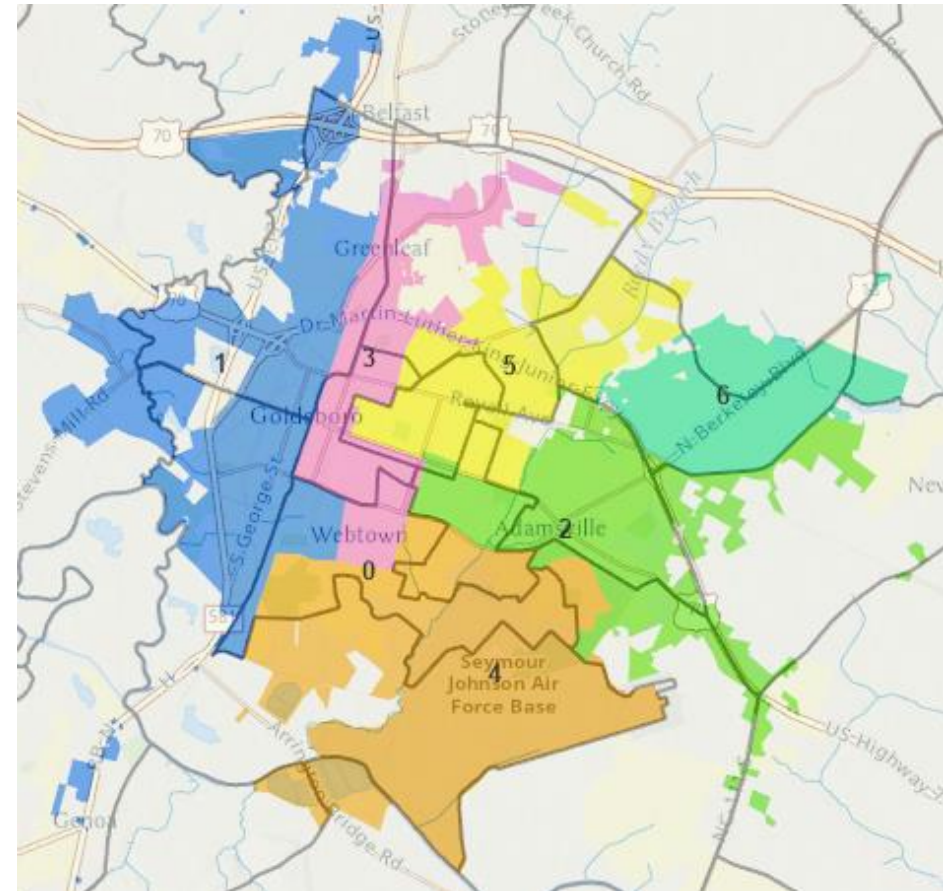


Side by side comparison with current map

Current Map



Alternative A



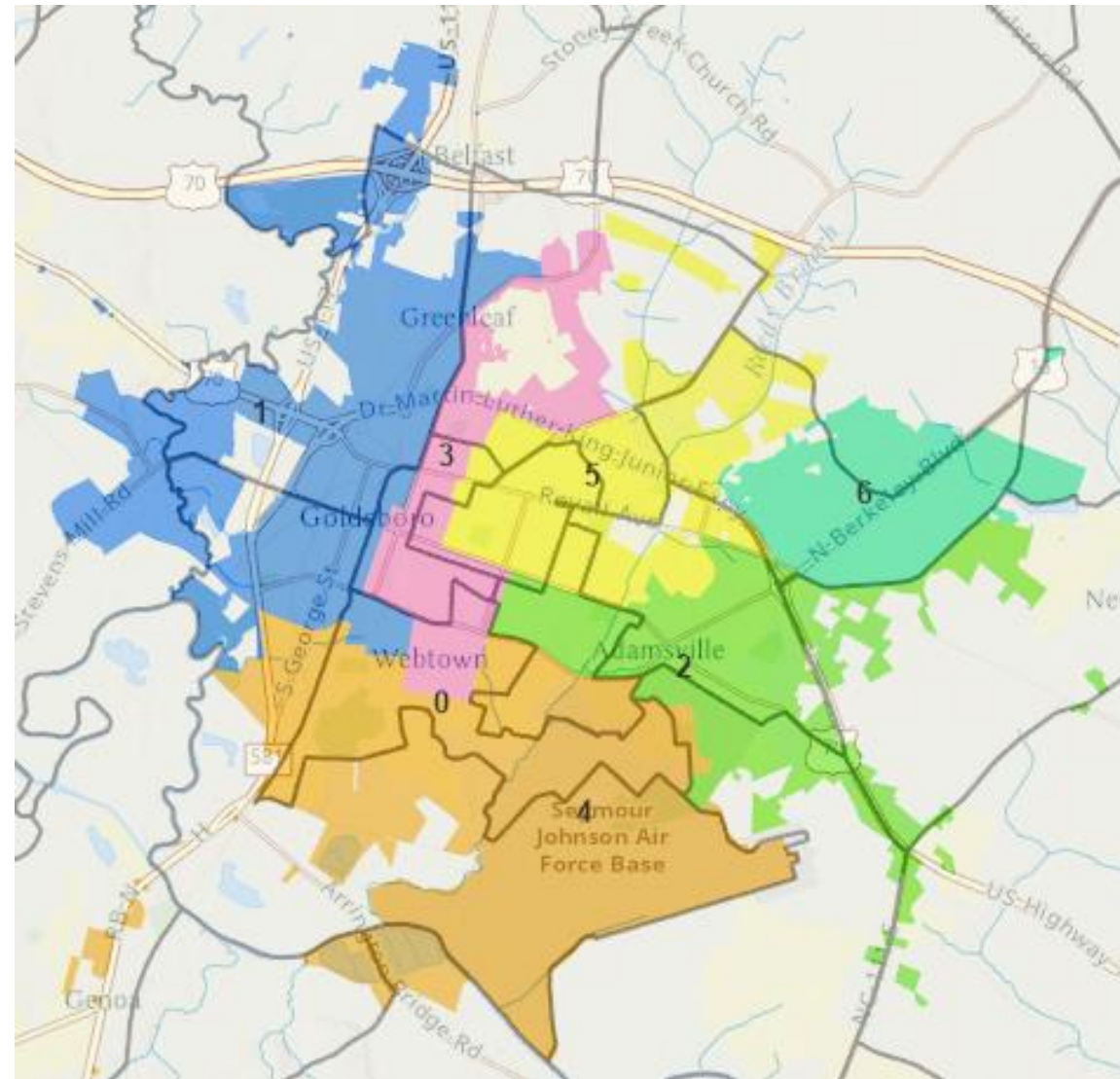
Option A – population and deviation

<u>District Number</u>	<u>Corrected 2020 Total Pop</u>	<u>Ideal Dist Pop</u>	Raw Number Deviation from <u>Ideal Pop</u>	Percent Deviation from Ideal Pop
1	5,495	5,708	-213	-3.73%
2	5,602	5,708	-106	-1.86%
3	5,669	5,708	-39	-0.68%
4	5,827	5,708	+119	+2.08%
5	5,978	5,708	+270	+4.73%
6	5,679	5,708	-29	-0.51%
City Total	34,250			

Characteristics of Alternative A

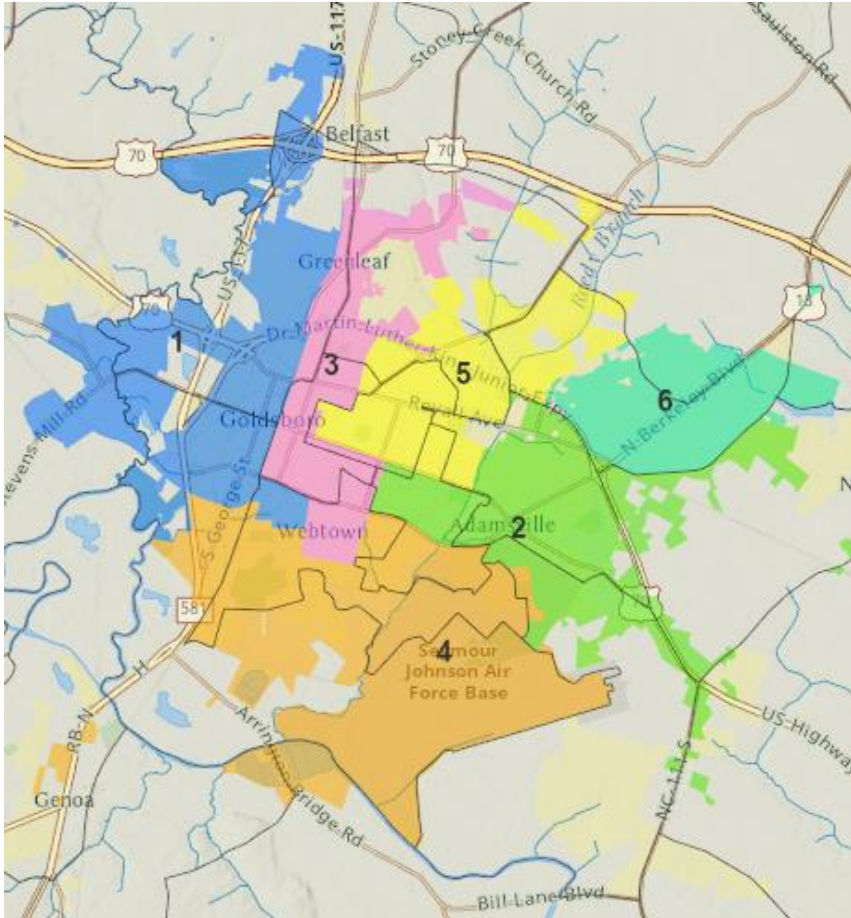
- District 3 is left untouched.
- District 1 makes up its deficit by taking territory from District 4 south of downtown.
- District 4 takes territory from District 2 in the residential part of Seymour Johnson AFB.
- District 2 takes three blocks on East Ash Street from District 5. Otherwise District 5 is unchanged.
- As in all the options, District 6 is unchanged.
- As in all the options, all incumbents are in a separate district with the same district number as now.

Goldsboro Option B

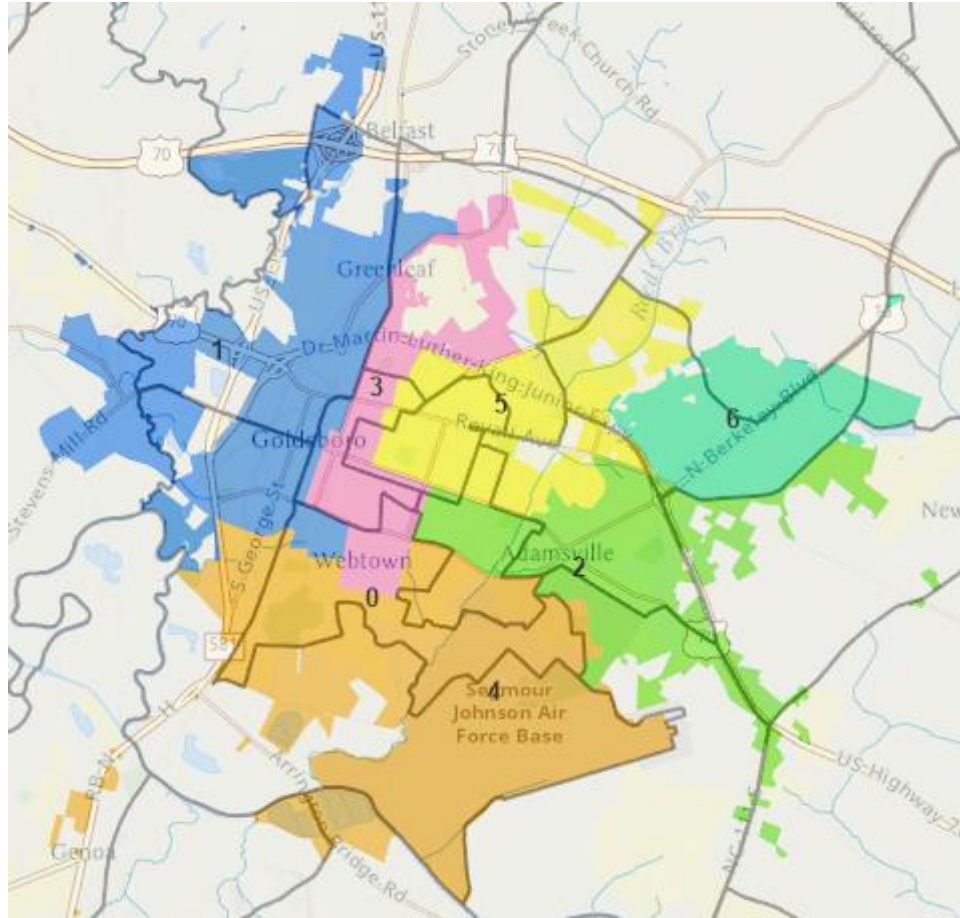


Side by side comparison with current map

Current Map



Option B



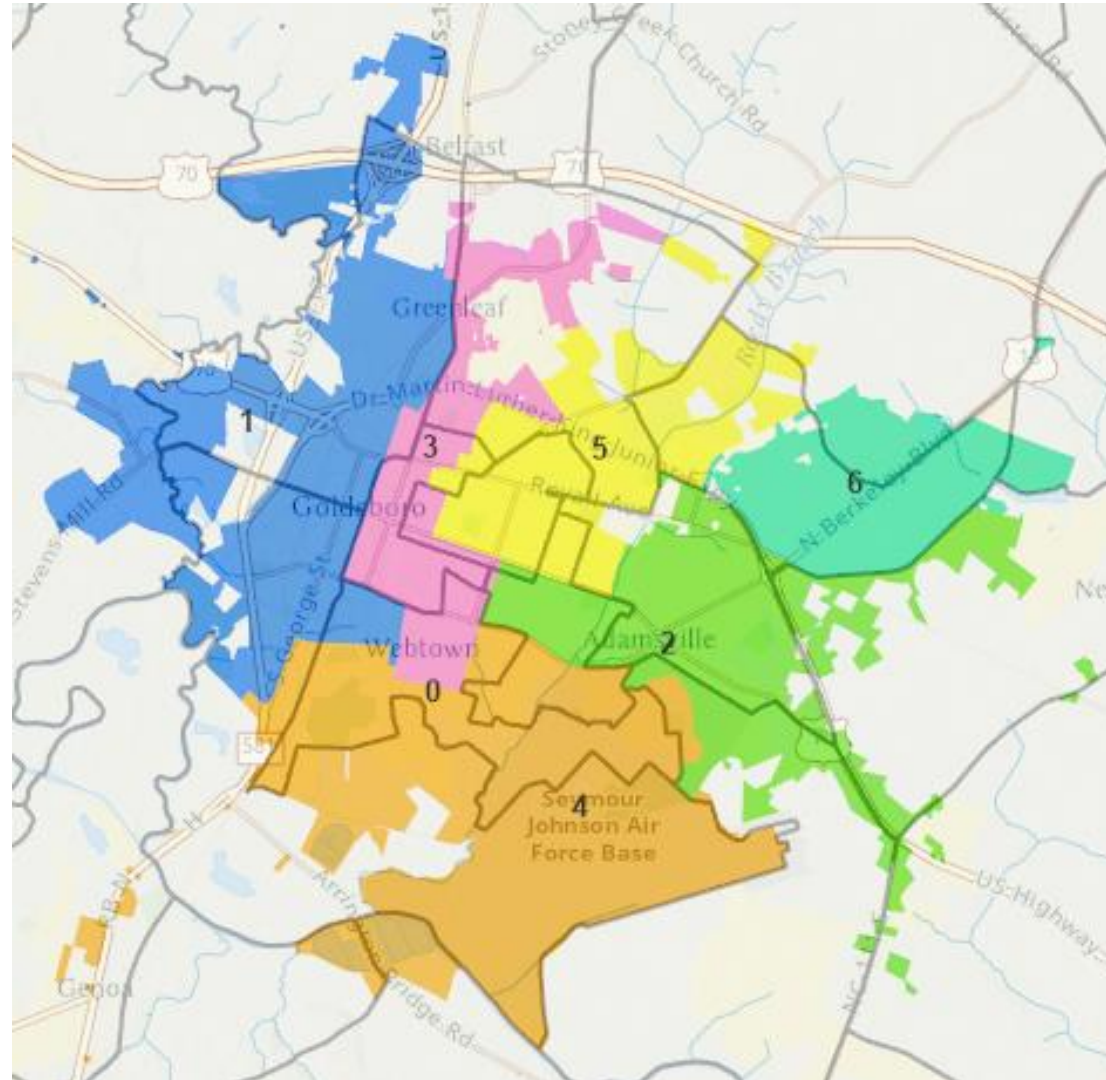
Option B population and deviation

<u>District</u>	<u>2020 Total Pop</u>	<u>Ideal Dist Pop</u>	Raw Number Deviation from <u>Ideal Pop</u>	Percent Deviation from Ideal Pop
1	5,615	5,708	-93	-1.63%
2	5,722	5,708	+14	+0.25%
3	5,932	5,708	+224	+3.92%
4	5,532	5,708	-176	-3.08%
5	5,770	5,708	+62	+1.09%
6	5,679	5,708	-29	-0.51%
City Total	34,250			

Characteristics of Alternative B

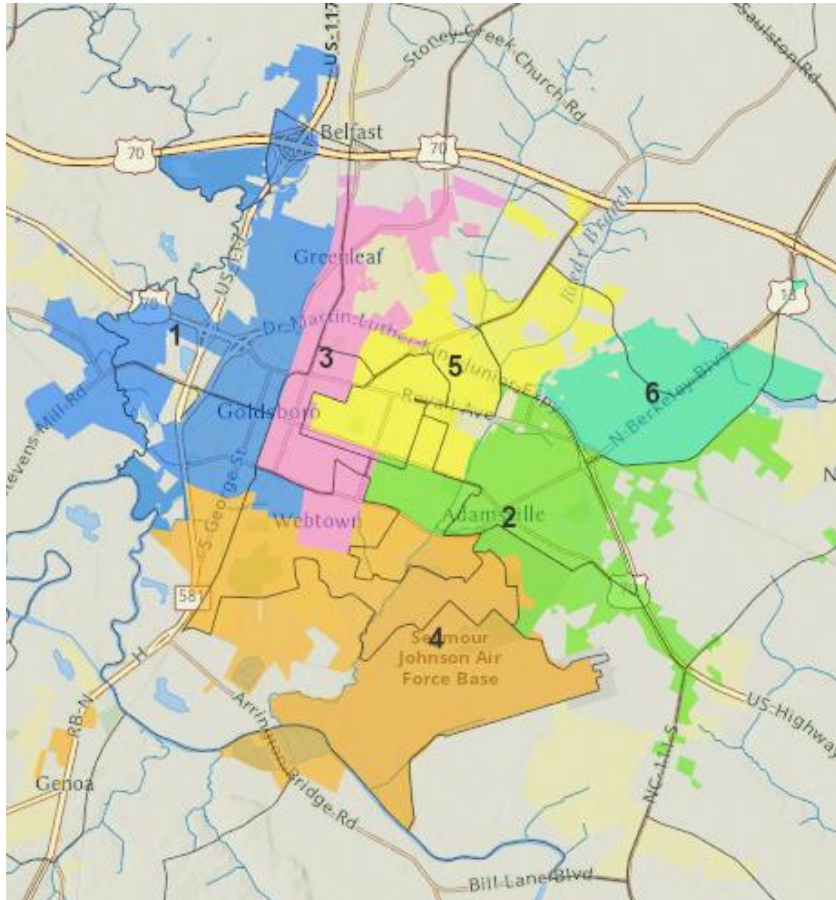
- District 4 is left untouched.
- District 1 makes up its deficit by taking territory from District 3 downtown, north of downtown, and in the Greenleaf area.
- District 3 takes territory from District 5 west of Goldsboro High School and west of Wayne Memorial Drive.
- District 5 takes territory from District 2 in the neighborhoods west of the Berkeley Mall.
- As in all the options, District 6 is unchanged.
- As in all the options, all incumbents are in a separate district with the same district number as now.

Goldsboro Option C

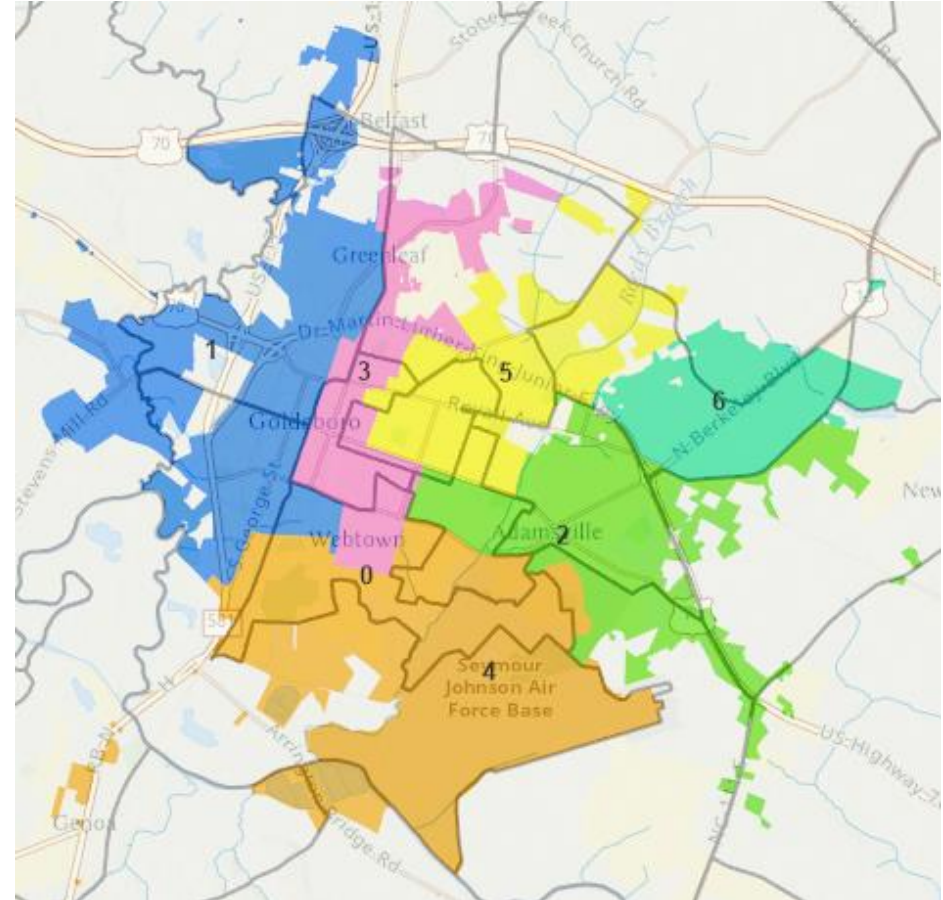


Side by side comparison with current map

Current Map



Option C



Alternative C - population and deviation

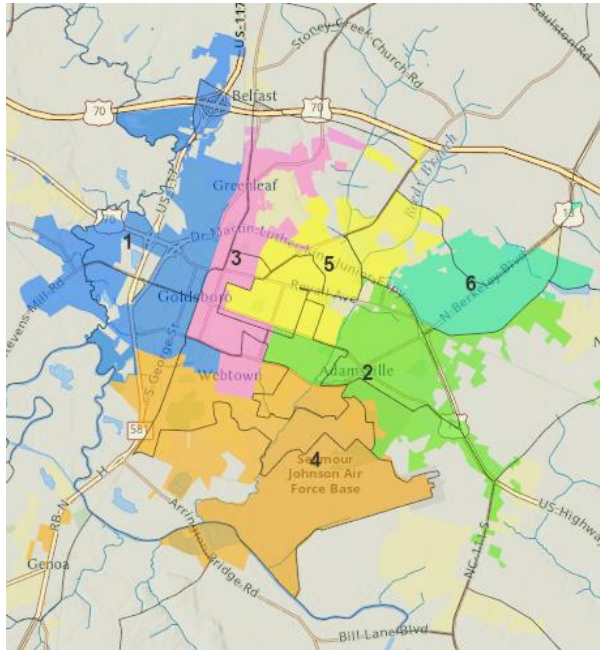
<u>District</u>	<u>2020 Total Pop</u>	<u>Ideal Dist Pop</u>	Raw Number Deviation from <u>Ideal Pop</u>	Percent Deviation from Ideal Pop
1	5,457	5,708	-251	-4.40%
2	5,930	5,708	+222	+3.89%
3	5,472	5,708	-236	-4.13%
4	5,781	5,708	+73	+1.28%
5	5,931	5,708	+223	+3.91%
6	5,679	5,708	-29	-0.51%
City Total	34,250			

Characteristics of Option C

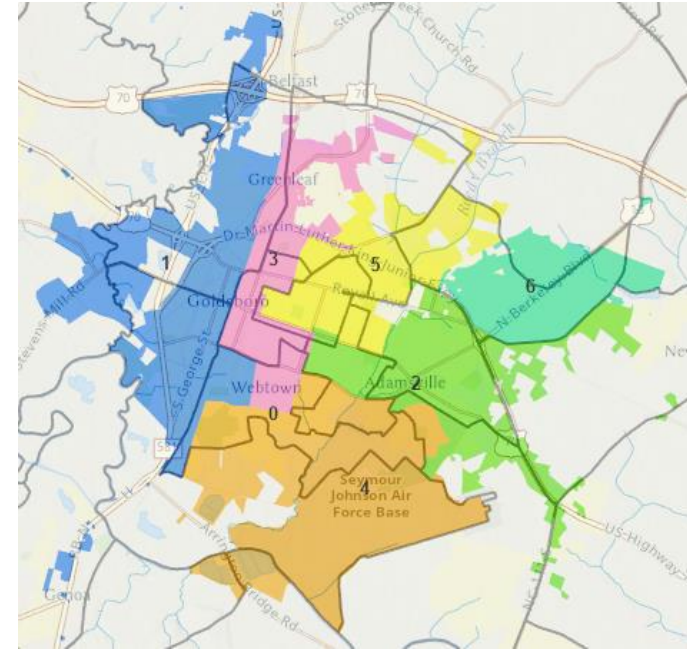
- District 1 makes up its deficit by going into both Districts 3 and 4.
- District 3 loses less of its western edge than in Option B. District 3 does not take the territory west of Wayne Memorial Drive from District 5 that it takes in Option B.
- District 4 loses less of the area south of downtown than in Option A. District 4 takes less territory in Seymour Johnson from District 2 than it does in Option A.
- District 5 is less changed than in Option B. It keeps the area on Wayne Memorial Drive it would lose in Option B and keeps the blocks along Ash Street it would lose in Option A. District 5 does not take the territory west of Berkeley Mall that it takes in Option B. The only change to District 5 is on its western border with District 3.
- District 2 loses less of Seymour Johnson than in Option A and does not gain or lose territory with District 5.
- As in all the options, District 6 is unchanged.
- As in all the options, all incumbents are in a separate district with the same district number as now.

Side by side comparison of all 4 maps

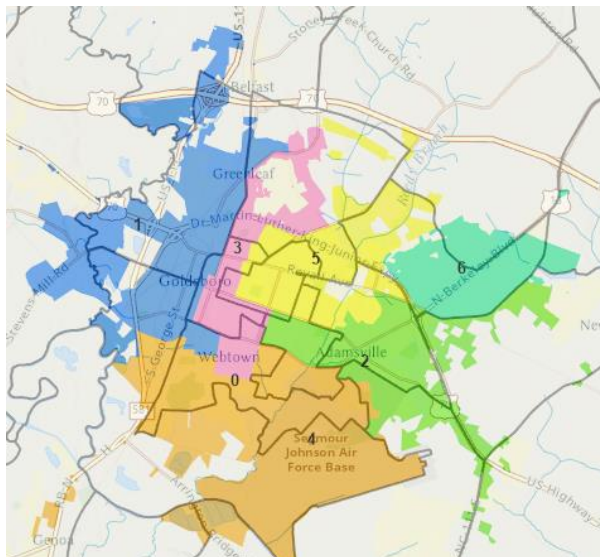
Current map



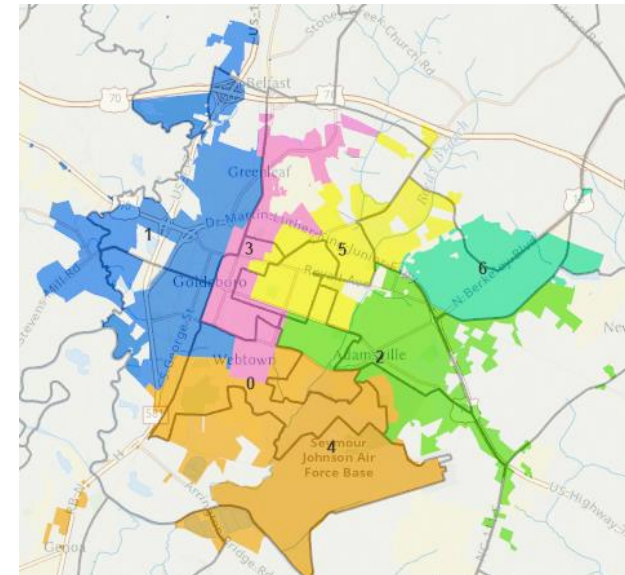
Option A



Option B



Option C



Demographic comparison for all 4 maps

<i>Black % of Total Population</i>					
<u>District</u>	<u>Current Uncorrected</u>	<u>Current Corrected</u>	<u>Option A</u>	<u>Option B</u>	<u>Option C</u>
1	63.96	63.37	65.28	63.92	64.91
2	40.96	40.96	44.82	42.68	42.53
3	69.34	69.31	69.31	68.91	68.31
4	64.01	64.01	55.47	64.01	60.23
5	57.79	57.77	57.86	53.00	57.90
6	42.10	42.10	42.10	42.10	42.10

<i>Black % of Voting Age Population</i>					
<u>District</u>	<u>Current Uncorrected</u>	<u>Current Corrected</u>	<u>Option A</u>	<u>Option B</u>	<u>Option C</u>
1	60.17	60.00	62.12	61.11	62.21
2	39.93	39.93	42.68	41.83	41.06
3	66.42	66.39	66.39	65.46	64.96
4	63.22	63.22	56.04	63.22	60.08
5	54.39	54.38	54.43	49.66	54.32
6	41.10	41.10	41.10	41.10	41.10

<i>White % of Total Population</i>					
<u>District</u>	<u>Current Uncorrected</u>	<u>Current Corrected</u>	<u>Option A</u>	<u>Option B</u>	<u>Option C</u>
1	29.69	30.51	28.41	29.47	28.42
2	45.72	45.72	42.65	43.60	44.54
3	22.92	22.88	22.88	23.42	24.21
4	26.48	26.48	33.71	26.48	29.63
5	32.82	32.90	32.79	37.56	32.73
6	45.04	45.04	45.04	45.04	45.04

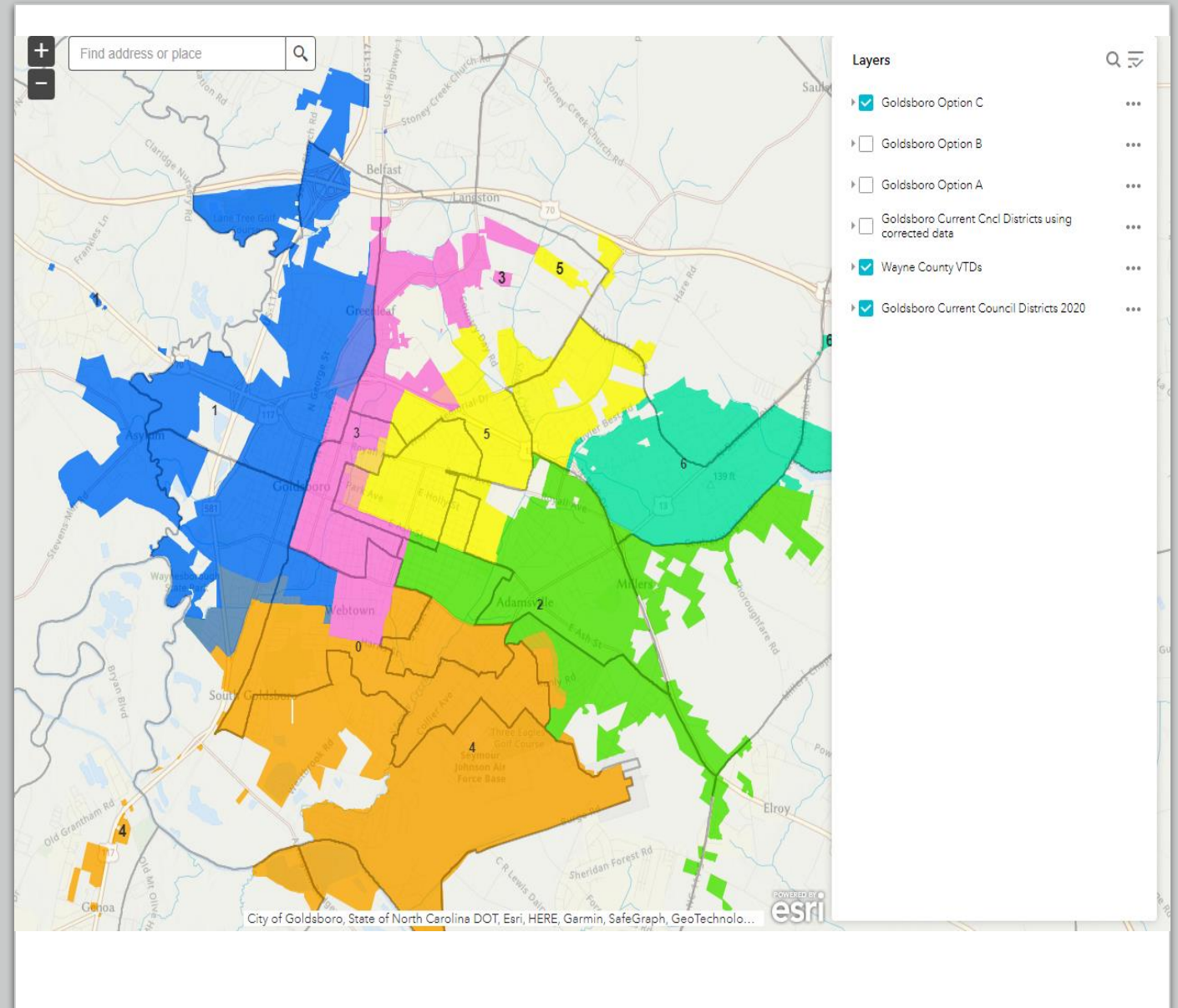
<i>White % of Voting Age Population</i>					
<u>District</u>	<u>Current Uncorrected</u>	<u>Current Corrected</u>	<u>Option A</u>	<u>Option B</u>	<u>Option C</u>
1	33.56	33.99	31.84	32.77	31.61
2	48.21	48.21	46.14	46.03	47.47
3	26.35	26.32	26.32	26.89	27.98
4	27.51	27.51	33.50	27.51	29.96
5	36.78	36.84	36.76	41.58	36.78
6	47.22	47.22	47.22	47.22	47.22

Next Steps

- Discuss alternative maps
- Public hearing on some or all plans
- Vote on selected plan and adopt resolution
- We will export final plan to Board of Elections

Interactive Map

- <https://mapfigurenc.maps.arcgis.com/apps/webappviewer/index.html?id=75d5abcdeeb9471fa2f4452124d04540>



Questions/Discussion